

ENGINE

PISTON AND LINER KITS
TRANSFER FUEL PUMPS
CRANKSHAFTS
CYLINDER HEAD
WATER PUMPS
OIL PUMPS
MANIFOLD
INJECTORS
MUFFLERS
BLOCK
TURBO



HYDRAULIC

FAN MOTOR GROUPS
CYLINDER GROUPS
VANE CARTRIDGES
PISTON PUMPS
GEAR PUMPS
VANE PUMPS
VALVES



PASSION FOR PARTS

THE QUALITY YOU DESERVE.

ITR offers one of the most comprehensive selections of high-quality parts for earthmoving machinery, **fully compatible** with leading OEM brands. With over 3,500 new items added annually, our range continues to grow, driven by the innovative design and engineering expertise of our team. Each part undergoes stringent inspections and testing to ensure it meets our **high standards of quality and complies** with OEM specifications, ensuring the **reliability and performance you can trust**. Discover our **full range**, including undercarriage parts, ground-engaging tools, demolition equipment, and much more, by visiting our website.



**HIGH QUALITY
STANDARDS**



AVAILABILITY



**COMPLETE
PRODUCT RANGE**

www.itrworld.com



PASSION FOR PARTS



REPAIR PARTS

Suitable for CAT® KOMATSU® VOLVO® HITACHI® & OTHER BRANDS

POWER TRAIN

SPROCKET FOR TANDEM CHAINS
CONVERTER GROUPS
TRANSMISSION PUMP
CLUTCH HOUSING
TANDEM CHAINS
SHAFTS
GEARS



FILTERS

FUEL-WATER SEPARATOR FILTER
OIL ENGINE FILTERS
CABIN AIR FILTER
HYDRAULIC OIL STRAINERS
FUEL FILTER
AIR FILTERS



UNDERCARRIAGE

TRACK ADJUSTER
EQUALIZER BARS
RECOIL SLEEVES
PIVOT SHAFTS
FINAL DRIVES
(FOR HEAVY MACHINERY)
GUARDS
BOGIES



FRICITION & BRAKE

AIR COMPRESSORS
DISCS FRICTION
DISC BRAKE
CYLINDERS
CALIPERS
DRUMS
PADS



ELECTRICAL

LIGHTS, CAMPS, LENS
STARTING MOTORS
AC COMPRESSOR
WIPER MOTORS
ALTERNATORS
ACTUATORS
AIR DRYERS



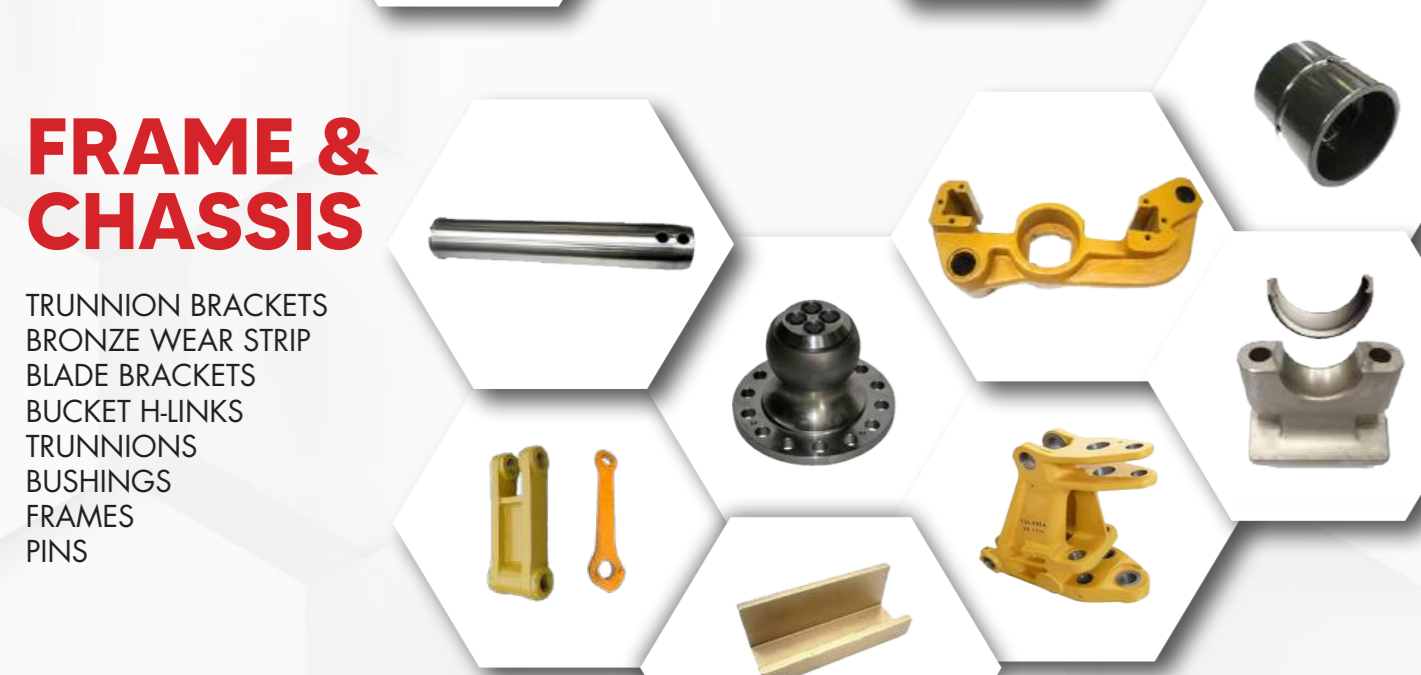
SWING

SWING SHAFT PINIONS
SLEWING GEARS
DRIVE GROUPS
HOUSINGS
CARRIERS
GEAR



FRAME & CHASSIS

TRUNNION BRACKETS
BRONZE WEAR STRIP
BLADE BRACKETS
BUCKET H-LINKS
TRUNNIONS
BUSHINGS
FRAMES
PINS



OPERATORS COMPARTMENTS

CABIN CUSHIONS
CONTROL PANELS
WIPER BLADES
GAS SPRINGS
GLASSES
GAUGES



FINAL DRIVES

FINAL DRIVES AND GEARBOXES
FOR EXCAVATORS RANGING
FROM 0.5 TO 25 TONS

